



# MONTHLY MEMBERSHIP PROGRESS REPORT

District 27 C1

Results as of: 03/31/2018

GMT: MICHAEL MOLEND A

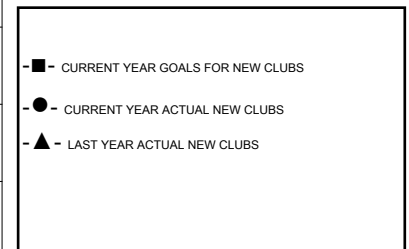
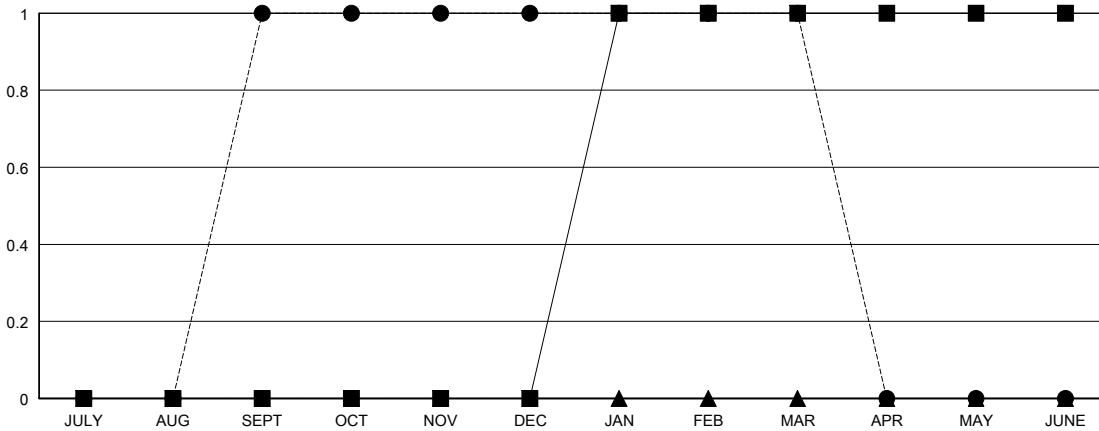
LOCATION WISCONSIN

GMT CA

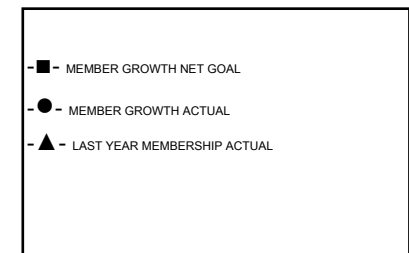
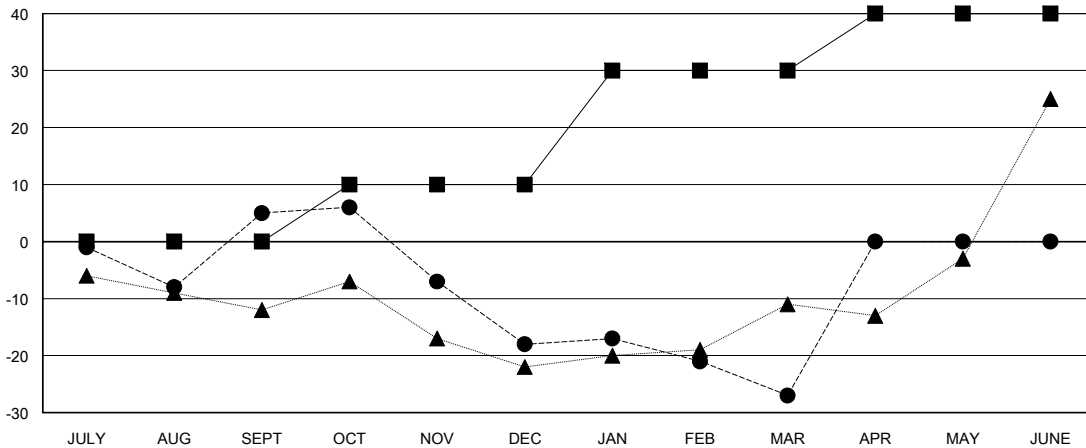
Clubs			
RESULTS FOR 2017-2018			
QUARTER	NEW CLUB GOAL	NEW CLUBS	DROPPED CLUBS
JULY/AUG/SEPT	0	1	0
OCT/NOV/DEC	0	0	0
JAN/FEB/MAR	1	0	0
APR/MAY/JUNE	0	0	0

Members			
RESULTS FOR 2017-2018			
QUARTER	MEMBER GROWTH NET GOAL	MEMBER GROWTH ACTUAL	DROPPED MEMBERS ACTUAL (including transfers)
JULY/AUG/SEPT	0	52	43
OCT/NOV/DEC	10	17	40
JAN/FEB/MAR	20	16	25
APR/MAY/JUNE	10	0	0

GOALS AND ACTUAL NEW CLUBS CUMULATIVE



GOALS AND ACTUAL MEMBERS CUMULATIVE



DROPPED CLUBS: 0
------------------

22 CLUBS OF 56 ADDED 1 OR MORE NEW MEMBERS

GENDER DISTRIBUTION	
MALE	1,160 (74.03%)
FEMALE	407 (25.97%)
Women Percentage Fiscal Year Goal: 25%	

DROPPED MEMBERS	
DECEASED	18
CLUB CANCELLED	0
OTHER	90
<b>TOTAL</b>	<b>108</b>

[CLICK HERE FOR CUMULATIVE MEMBERSHIP DATA](#)

TOTAL FAMILY UNIT MEMBERS	369
FAMILY MEMBERS PAYING HALF DUES	186